

CYTOFLEX®

TI-ENFORCED®

Titanium Reinforced ePTFE Membrane

Cytoflex® Ti-Enforced® is a passive, non-load bearing membrane with a titanium frame enclosed within two layers of ePTFE material. The titanium frame enhances space and shape maintenance of graft material during the bone regeneration process. The space-making membrane is intended for the treatment of periodontal defects and alveolar ridge augmentation according to the guided tissue regeneration principle. It is to be submerged and implanted for more than 30 days and up to 6 months. The Cytoflex® Ti-Enforced® membrane can be easily conformed to the graft site, and the titanium frame does not delaminate with simple trimming.



Advantages

Thin and soft

Easily conformable

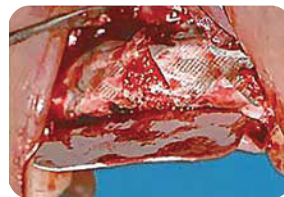
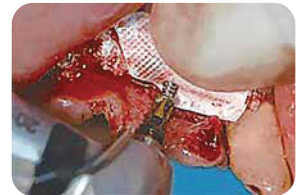
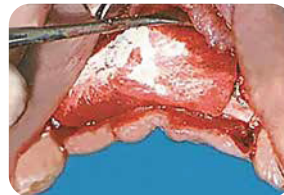
Textured on both surfaces

Case 1



Two 32mm x 40mm
Ti-Enforced® membranes
placed

Case 2



Two 30mm x 41mm Ti-Enforced® membranes placed

888.841.8418

www.AD-Surgical.com